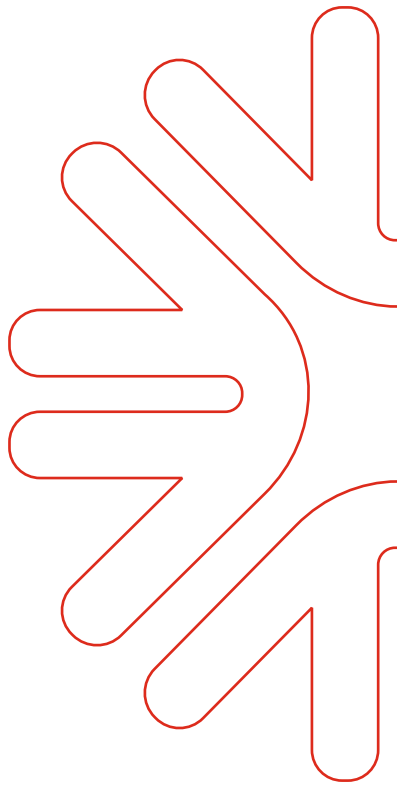


## OUR GROUP OF COMPANIES

- **Narayan Tools LLP.**  
(Manufacturer of Diamond Roller (Callibration Roller) and Squaring Wheel)  
Add : Opp. Dariyalal Hotel,  
8-A.N.H., Jambudia, Morbi.  
Cell : +91 90997 48948 / +91 94269 62641
- **HENGXING MOULD PVT. LTD.**  
(Manufacturer of isostatic Punch, Normal Punch, Alloy Liner and Diebox)  
Add : Opp. Dariyalal Hotel,  
8-A.N.H., Jambudia, Morbi.  
Cell : +91 98791 89927 / +91 96875 88669
- **Zamin Natural Resources**  
(Manufacturer of Washed Feldspar)  
Add. : Vil. Kundiya(Kanakhera), Ta. : Masuda,  
Beawar-305202, Rajashtan.  
Cell : +91 78744 46666 / +91 98250 62520
- **Globle Natural Resources**  
(Dealing in Feldspar and other Raw Material)  
Add.: Shakti Chamber – 2, Opp. Adarsh Hotel,  
8-A. N.H. Morbi.  
Cell : +91 98798 33001 / +91 78744 46666
- **SAMAY HYDRAULIC (SAMAY TRADERS)**  
(Dealing in all types of Hy.Spare parts)  
Add : 49/50 Shakti Chamber-1, Opp. Adarsh Hotel,  
8-A, National Highway, Morbi.  
Cell : +91 90999 23163 / +91 99252 23163
- **SAMAY ENTERPRISE**  
(Dealing in all type of Polishing line spare parts and Sqaring Machine Spare parts, Abrasive & Gears)  
Add : 28/29 Shakti Chamber-2, Opp. Adarsh Hotel,  
8-A, National Highway, Morbi.  
Cell : +91-93755 40441 / +91-98255 10333



# An Experiential Dealing

28/29 Shakti Chamber-2,8-A, N.H., Opp. Adarsh Hotel, Morbi.-363 642. (Guj.) INDIA.

Tel. : +91-2822-244115 • Mob. : +91-98792 78707, +91-89800 01558

E-mail : rohit@mahalaxmiinternational.com, sales@mahalaxmiinternational.com, • Web : www.mahalaxmiinternational.com

## ABOUT US

MAHALAXMI INTERNATIONAL was established in 2010 as a leading importer and exporter in ceramic industry.

With the combined Sales and Service experience over 20 years we are delivering the best raw materials and machineries to the ceramic industry.

Over the years we have grown and developed with the vision and passion to serve the customer. Our strength, continuous R&D, expertise in machinery and effective sales, helped us to get huge market share in ceramic industry.

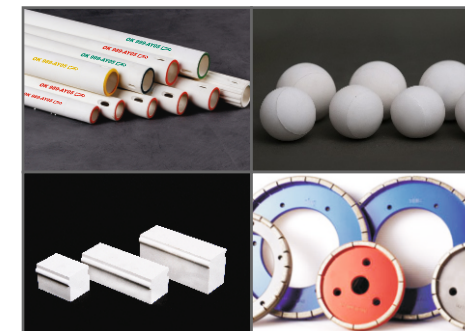
We are the customer centric organization and focus on maintaining relationship with the clients. With the love of customer and continuous business from the same customer, we pushed to develop more products and serve them with better solutions.

We believe in COMMITMENT, CUSTOMER SATISFACTION and ONTIME SERVICE.

## INDEX

### CONSUMPTIVE MATERIALS FOR CERAMIC FACTORY

1. Ceramic Roller
2. Alumina Ball ( 68% & 92% )
3. Lining Brick ( 68% & 92% )
4. Squaring Wheel ( Wet & Dry )



### MACHINERY FOR CERAMIC FACTORY (Spray Dryer)

5. Ball Mill (40ton and 60ton)
6. Slip Pump For Spray Dryer (Rotor Type)
7. Piston Pump For Spray Dryer
8. Slurry Pump For Slurry Transfer (Rotor Type)



### MACHINERY FOR CERAMIC FACTORY (Plant)

9. Complete Glazing Line
10. Bell Flow (HMNI-China)
11. Vella Flow (Italy)
12. Airless System (Fixed and Movable) (Italy)
13. Powder Grit (Dry Granula M/c) (Italy)
14. Compensator (For Kiln and For Glazline)
15. 2<sup>nd</sup> Hand Sacmi Press
16. Other Machinery For Ceramic Industry







CERAMIC ROLLER

APPLICATION

Widely used in the kiln for manufacturing of Wall Tiles, Floor Tiles, Vitrified Tiles, ThinTiles,Tableware and Steel Product like Sink.

FEATURES

Aokerola rollers manufactured with advanced formulations and recipe, has strong thermal shock resistance, higher bending strength & could heavy loaded in high temperature, they are regarded as the best solution for Roller kiln.

DIMENSION

Diameter(mm)	Length(mm)	Diameter(mm)	Length(mm)
65-80	3000~5200	40	2000~3500
60	2700~5000	36	2000~3000
55	2700~5000	35	2000~3200
50	2400~4600	37.7	1800~3100
45	2200~3800	32	1800~3100
42	2200~3800	16~31	1600~3100



TECHNICAL DATA

Code	Unit	OK979	OK989	OK999
Marking Color	/	Blue	Red	Green
Max. Service Temp.	℃	1280	1350	1400
AL <sub>2</sub> O <sub>3</sub> Content	%	≥76	≥80	≥85
Bulk Density	g/cm <sup>3</sup>	2.6~2.8	2.7~2.9	2.8~3.0
Rate of Water Absorption	%	≤9	≤7	≤6.5
Anti-bending Strength	MPa	≥45	≥51	≥58
Thermal Shock Resistance	/	Excellent	Excellent	Excellent
Refractory Degree	℃	≥1750	≥1800	≥1860





## ALUMINA BALL

### APPLICATION

With advanced cutting technology ,high quality alumina powder as raw materials & sophisticated recipe, our products are the best solution as grinding media applied in various field such as ceramic industry, cement industry, paint industry, pigment industry, chemical industry, pharmaceutical industry, coating and mining industry.

### FEATURES

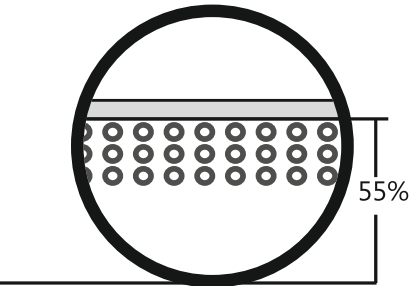
High density, high hardness ,low wear loss, good erosion resistance, regular shape, etc.

### TECHNICAL INDEX

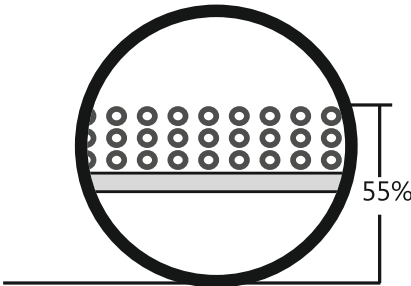
Qualification	JD-68	JD-75	JD-80	JD-85	JD-92
Al <sub>2</sub> O <sub>3</sub> Content	≥68	≥75	≥80	≥85	≥92
Density	2.95-3.02	3.2-3.25	3.30-3.35	3.40-3.45	3.60-3.70
Hardness	7.5	8	9	9	9
Compressive strength	≥1700	≥1800	≥1800	≥1850	≥2000
Equivalent wear	≤0.18‰	≤0.12‰	≤0.10‰	≤0.08‰	≤0.05‰
Color	Light yellow	Grey	White	White	White

### Filling guidance for Using

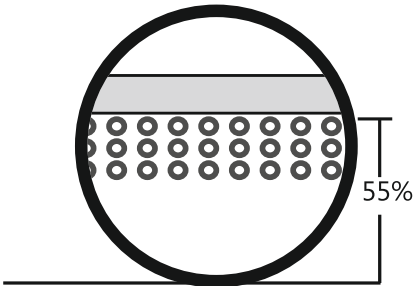
During wet grinding process, charge balls up to 50%-55% net volume of ball mill, 25%-30% space must be empty Inside ball mill.



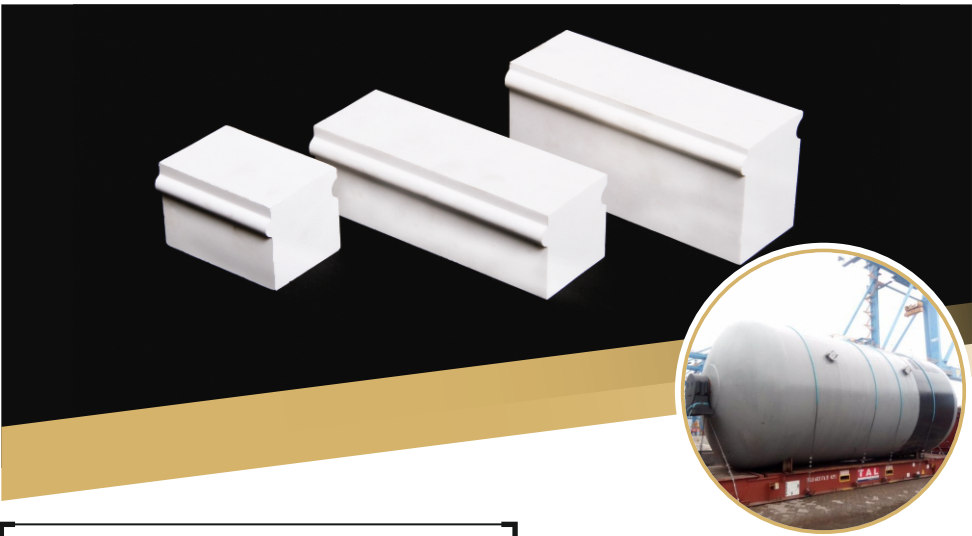
Correct Charging



Wrong Charging:faster wear and tear of lining bricks by overfull alumina balls.



Wrong Charging:longer grinding time by overfull raw materials



## ALUMINA LINING BRICKS

### APPLICATION

The Alumina lining bricks are used as the lining in the ball mill of ceramic industry, cement industry, paint industry, pigment industry, chemical industry and pharmaceutical industry.

### FEATURES

Using this liner will effectively improve grinding efficiency, reduce grinding cost, it is considered to be the best choice for ball mill lining.

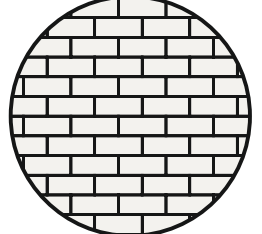
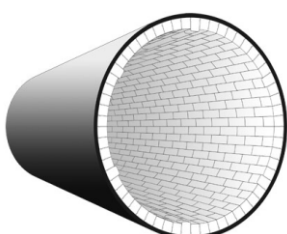
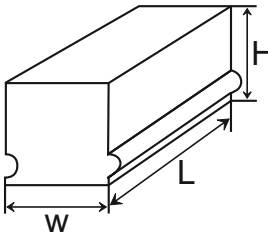
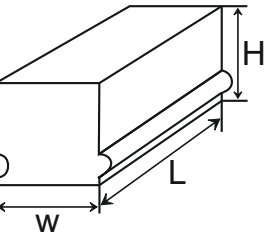
### DIMENSION

Size	Length(mm)	Width(mm)	Height(mm)
Straight brick	150	50	40/50/60/70/90
Trapezoid brick	150	45/50	40/50/60/70/90
Half straight brick	75	50	40/50/60/70/90
Half trapezoid brick	75	45/50	40/50/60/70/90
Flacks	150	25	40/50/60/70/90

### Filling guidance for Using

Before installation, all the partial remaining of bricks and cement on the inner surface should be completely removed, the smooth surface should be made hoarse, damaged iron, surface should be repaired through welding if it is badly worn.

For installation, grout width should be about 1mm using 425# white cement. Brick should be laid from level area of ball mill and moving upward. Surface area should be clean and kept wet by spraying water for 1 to 2 days to increase the cohesion for max hardness. Finally, the ball mill should be filled with water for minimum of 10 days.





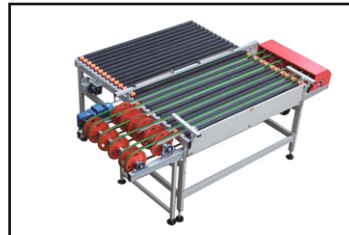
## GLAZING LINE

### APPLICATION

We are supplying the complete Glazing line solution for Vitrified tiles. Our glazing line is the best choice to make up the tile surface. We supply line from exit of dryer up to entry of kiln. Our latest technology will help you to manufacture the latest design and quality tiles. Our Glazing line is the combination of some important machinery



Flat Belt Glaze Line



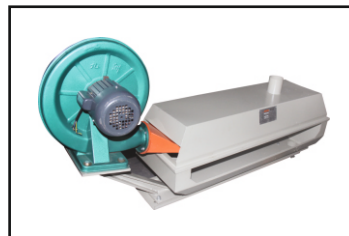
Roller Up & Down



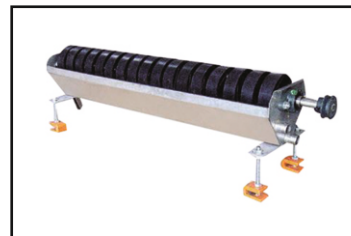
Magic Table



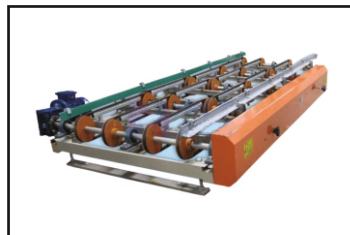
Double Layer 90° Curve Unit



Dust Blower



Engobe Unit



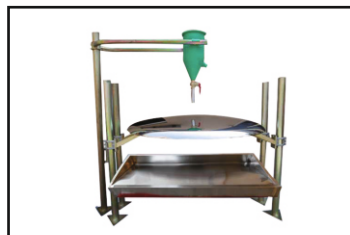
Tile Uniformer



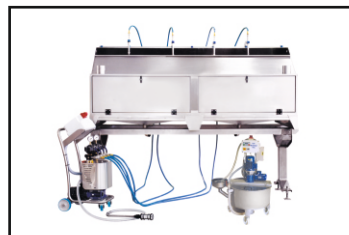
Tile Turner



Compensator



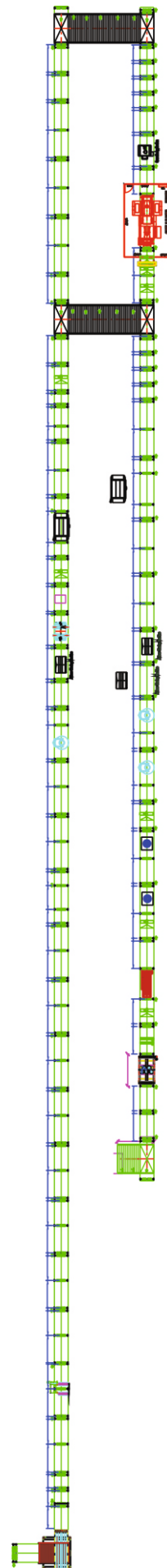
Bell Flow



Airless System



Vella Flow

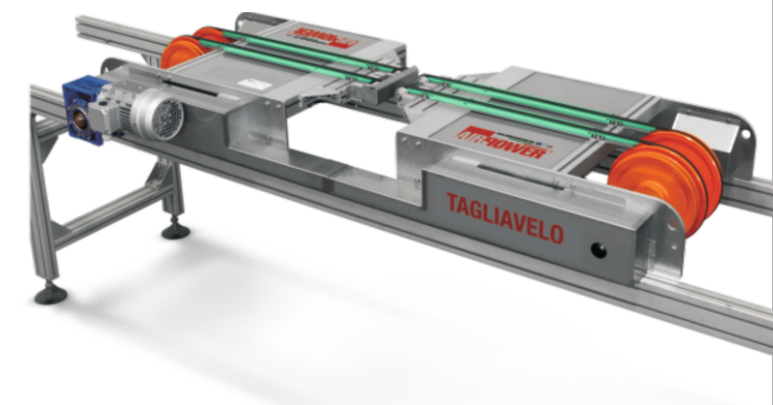


## SURFACE EASY 850 SB CONTROL WEIGHT

**AIRPOWER**® - Italy  
www.airpowergroup.com



## CUTTING VEIL



### Advantages of AIRPOWER SURFACE EASY 850SB CONTROL WEIGHT

- Minimum 5% Glaze Saving.
- Easy to Operate with Digital Device.
- Can Maintain Exact Quantity of Glaze.
- Easy to wash.
- Excellent Surface of Tile than Normal Bell flow.
- Can Maintain Viscosity and Density for Long Time with special Device (Pressure meter) and with Special Designed Pump.
- Longer Life of Ceramic Roller by using Cutting Veil.



### SPECIAL AIRLESS SYSTEM HP ECO

**AIRPOWER® - Italy**  
www.airpowergroup.com

Airless glazes, engobes and transparent frits application system that guarantees the full control of the glazing process. It is equipped with a pressure transducer that checks and keeps the working pressure constant. The nozzles condition is controlled by an alarm system with sound and visual effect that indicates wear and tear or occlusion of the same nozzles. Moreover, through the economy function it's possible to save energy and avoid product wastes in case of accidental production stops. Special Airless HP Economy system is a total guarantee to obtain the utmost result.



### POWDER GRITS 700-900-1200-1600

### COLD TILE TROPICAL



Machine opening for the internal control with pneumatic lift to easy the periodic filters cleaning and the double condenser washing. Internal transport drive with No.4 belts, B section with gear motor. Tile surface temperature control with inlet and outlet pyrometers. Touch screen operator electric control panel equipped with software for complete machine control.



Powder grits is the machine for application of powders and grits. The system is composed of a tank/elevator for loading the product, a head for the distribution on the tile of the same product and a belt for excessive material recovery. By means of the control board it is possible to select among different working programs and to store the diverse created recipes.

### SLIM COVER (Movable Airless)

**AIRPOWER® - Italy**  
www.airpowergroup.com



Complete airless system for big sizes, wholly made of stainless steel with a single aspirated bottom booth. Glaze application equipped complete with n°4 & n°6 airless spray-guns. Upper axis featured by a single transfer with a touch screen control board implemented by plc, with uncountable storable applicative/working recipes.

The cabin is made of stainless steel Aisi 304 and it is provided with anti over spray nets, with belt protection and with inspections doors for the manual washing. The airless system is complete with diagraph pump, hoses, spray guns and nozzles.



## SLIM COVER FAST (Movable Airless)

**AIRPOWER® - Italy**  
www.airpowergroup.com



The new SLIM COVER FAST series represent excellence regarding the large format machines application.

Machine deliberately manufactured for big size, completely made of stainless steel, upper multi-axis with shifters of carbon fiber. Vault cabin with non-stick treatment.

Multi-axis format with 6 upper separated transfer shafts with carbon fiber support arms.

Glaze application through n° 4 & n° 6 stainless steel airless spray-guns. Non-stick interior cabin to avoid abrasion or similar damages. Touch screen control board/panel with IP65 protection, and equipped with PLC, 15", communication by remote using Ethernet cable.

Multi-axis brushless motors system controlled by electric board, provided with master-slave axis and driving unit. Preset configuration for monitor system of the application nozzles with cameras (optional) arranged inside the cabin. Data exchange network client/operator via Ethernet and standard OPC UA protocol, managing remotely the machine with VNC, configuration of production boards. Complete machinery kit (including hoses, spray guns and nozzles).

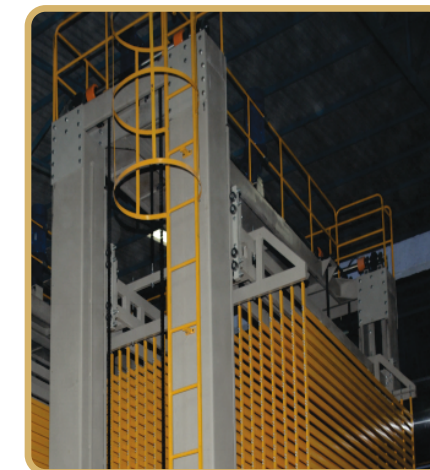
## KILN COMPENSATOR

This machine is an important auxiliary equipment of the fully-automatic production line. During production, manmade or mechanical fault may occur, resulting in production stop or kiln idling and causing heat energy waste and inner temperature rise. Consequently, the following Tiles entering the kiln may be defective.

If this machine is installed, Tiles can be stored in the machine in advance and discharge the ceramic in case of any fault, avoiding kiln idling and subsequent issue from happening.

The storage capacity of this machine can be set to 150m<sup>2</sup> or 500m<sup>2</sup>, depending on customer requirements.

The beam of the machine is pressed from 8mm steel sheet and shaped as the letter C and all the beams constitute a lying letter H. the four columns make the machine stable. The storage rack is made from 40\*20 square pipes with the two ends being detachable plastic head of facilitate installation and maintenance. The roller of this equipment is made of seamless steel pipe and coated with durable rubber. The outer ring is processed by the milling equipment developed, which ensures the circumferential runout precision  $\pm 0.3\text{mm}$ . The design ensures roller running stability and avoids hidden cracks and defectives caused by roller runout. The roller is driven by helical gears, ensuring conveyance stability and reliability.



## FIRST IN FIRST OUT

Our new technology of machine provides you the tile storage with FIRST IN FIRST OUT facility. It help you to take out tile which store first in the compensator. It reduces many problems of tile.

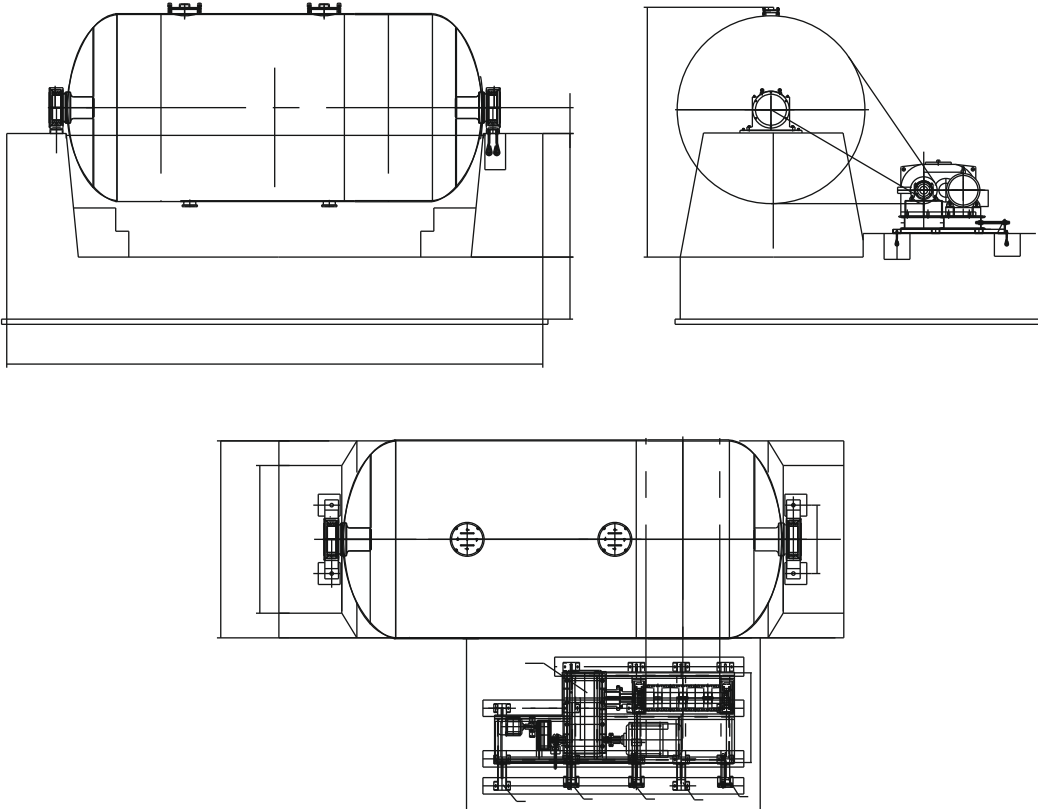
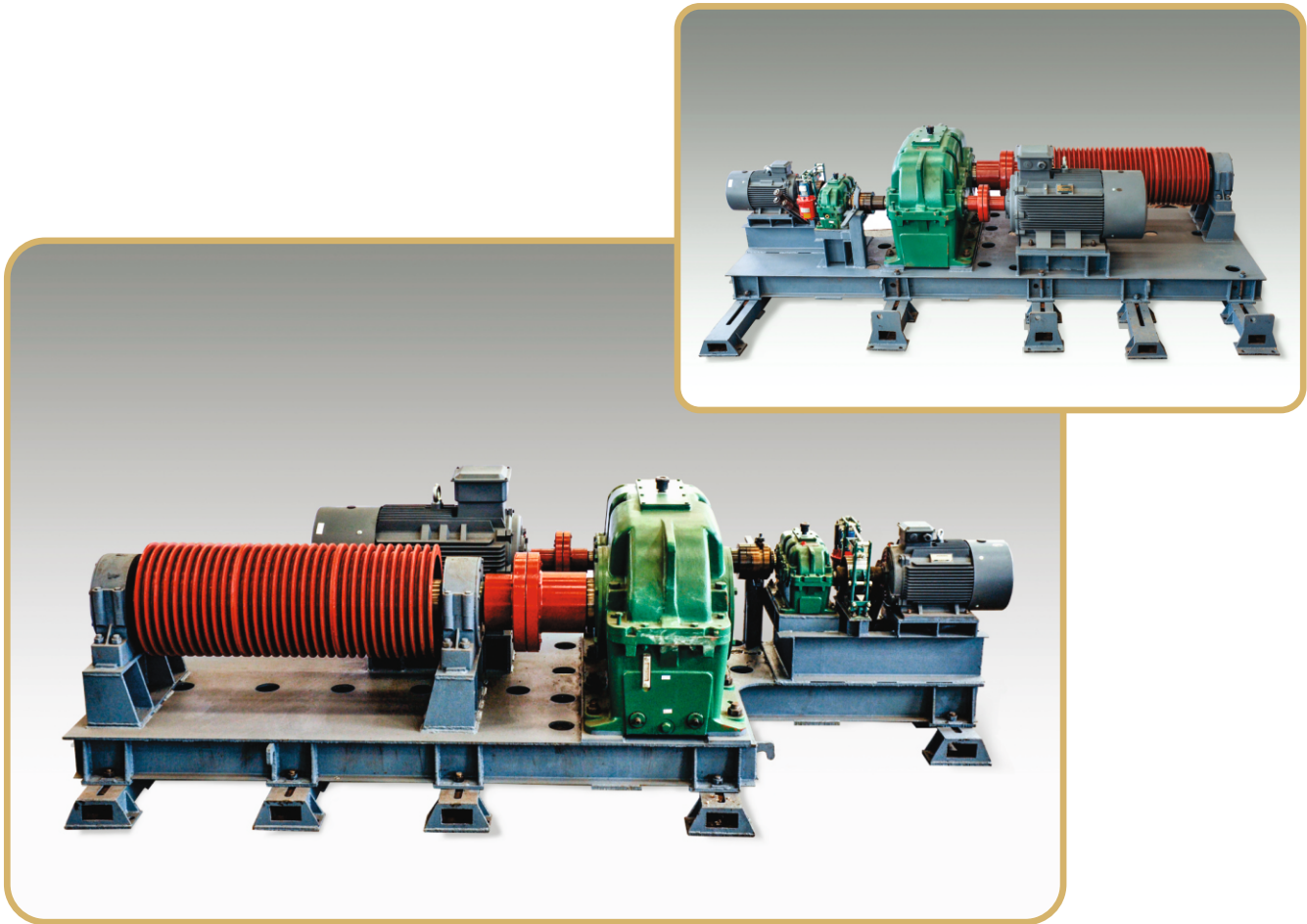
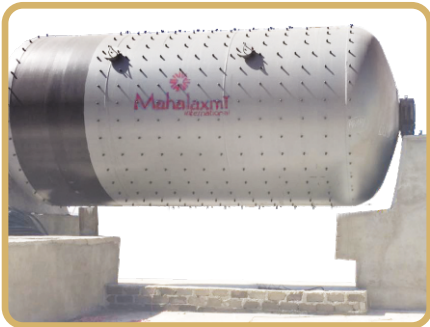




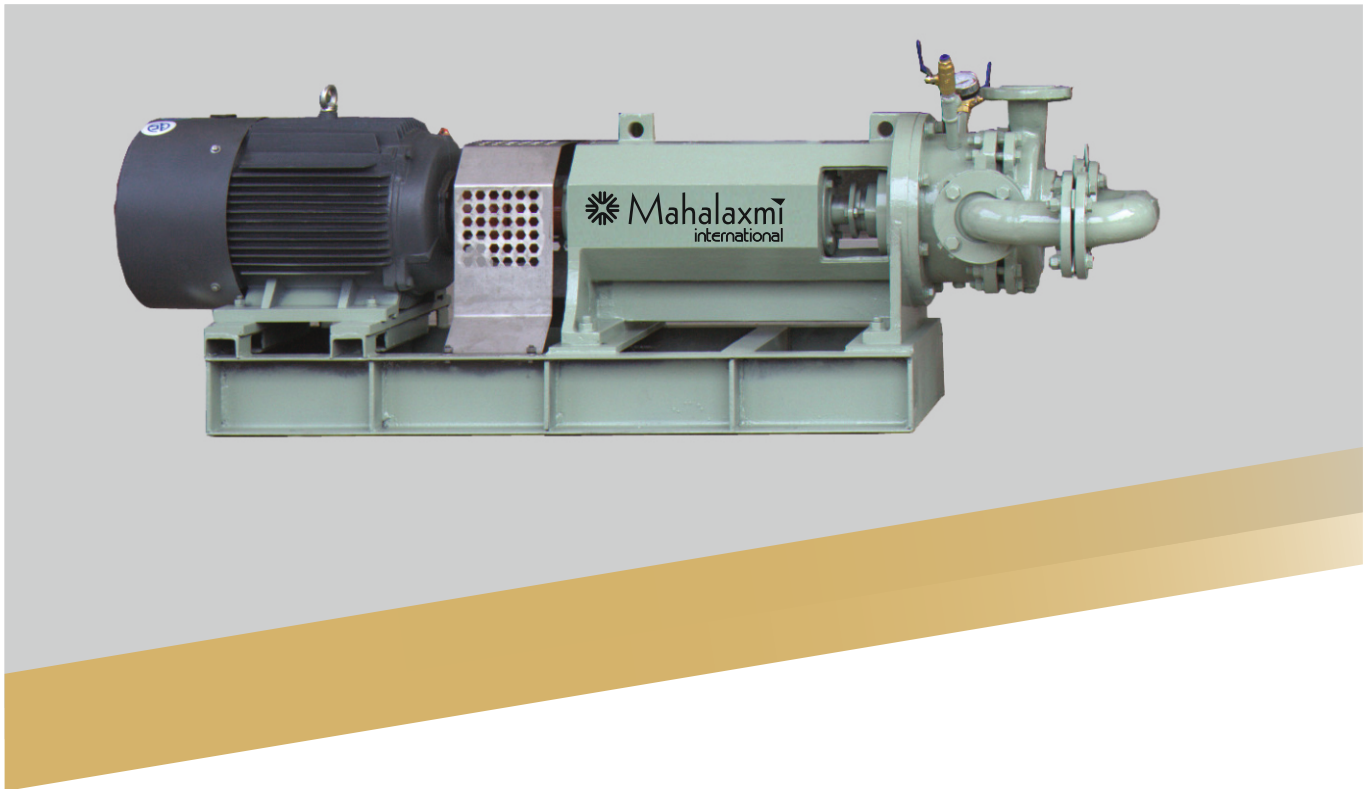
**BALL MILL**

**MAHALAXMI 40T & 60T Ball Mill**

Mahalaxmi Ball mill could meet the fine grinding requirement of all kinds of ceramic raw materials. Continuous type and large ton ball mills manufactured by Mahalaxmi are the ideal machinery for ceramic raw materials. They have the advantages of easy starting, low energy consumption, high quantity & quality output. By using Mahalaxmi Ball mill, it will improve the grinding efficiency enormously thus reduce the production cost.







**SLIP PUMP**

**APPLICATION**

Powder manufacturer for spray drying tower, Filtered mud of filter press, Transport slurry at great distances(300 to 1500 meters), or pour slurry from very close distance(one pump can be used for many pools).

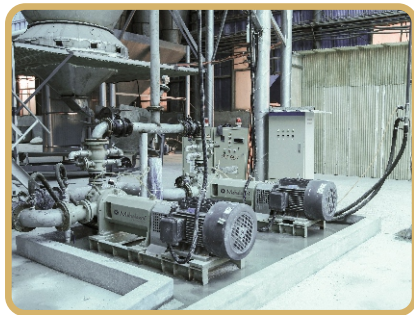
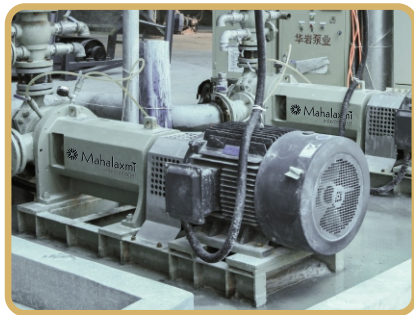
**FEATURES**

- 1.Save electricity. Compared to plunger pump, saving electricity more than thirty percent.
- 2.Low operation cost, simple construction, easy to maintain.
- 3.Stable operation, simple operation, reduce the labor intensity of operators and maintainer.
- 4.Good in powder process, large production.

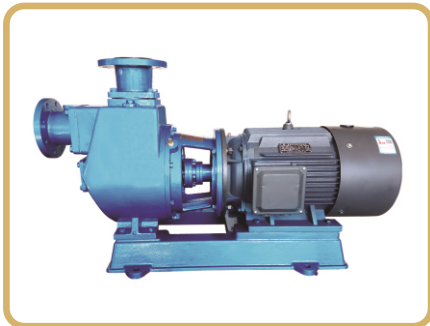
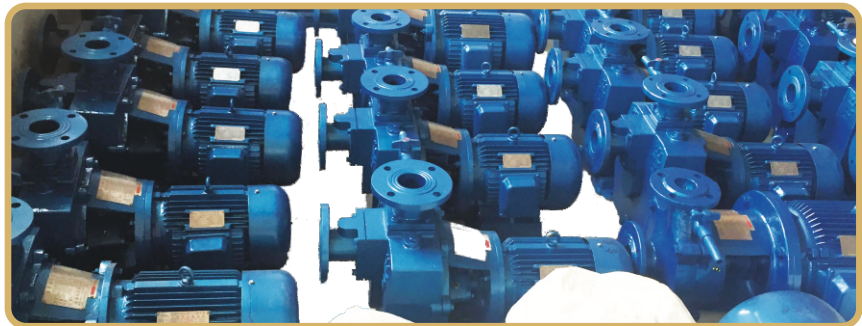
**TECHNICAL INDEX**

Model	Most economic powder manufacturing amount T/24h	Equivalent T/h	Allowable maximum powder manufacturing amount /24h	Equivalent T/h
SLIP PUMP 450-22	200-300	10	450	20
SLIP PUMP 600-30	300-400	15	600	25
SLIP PUMP 1000-37	400-600	20	1000	40
SLIP PUMP 1200-45	600-800	30	1200	50
SLIP PUMP 1600-55	800-1200	40	1600	65
SLIP PUMP 1800-75	1200-1400	50	1800	75
SLIP PUMP 2400-90	1600-2000	70	2400	100
SLIP PUMP 3000-110	2000-2600	100	3000	125

**PUMP RUNNING IN FACTORY WORKSHOP (TILES).**



**SLURRY PUMP**



**APPLICATION**

It is used to transport slurry from one tank to another tank. It can also used to transfer slurry from the ground tank to the service tank. It is used to suck slurry from the ground tank up to 4 meter deep and through at different distance level as per different model capacity.

**PISTON PUMP**



**Hydraulic Piston Slurry Pump**

**Usage:** The plunger pump (piston pump) are designed for transporting sludge (slurry), feeding to the filter press and spray-dryers.

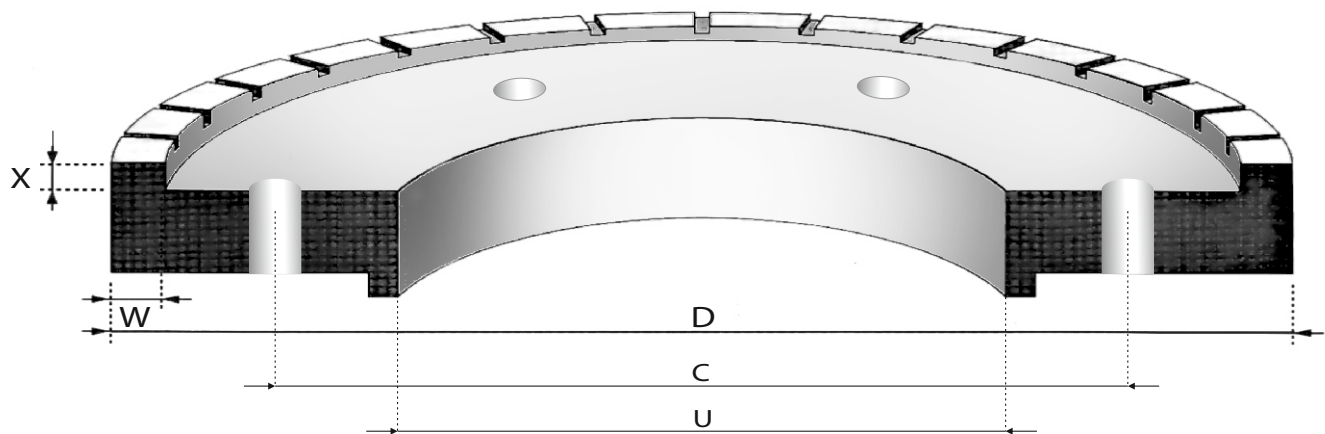
**Principle:** The plunger pump (piston pump) assembly creates a certain fluid delivery and keeps it to the pressure level necessary for the plant, where the pump is installed, to work regularly. The plunger pump (piston pump) is, therefore, formed by two cylinders with porcelain piston, by suction and delivery valves, by an air tank and by a manometer, which is placed on the fluid delivery line to check the fluid pressure.

**Model:** YB140, YB200, YB250 and YB-300. Their capacities are 0.3M3/h-40 M3/h,



WET & DRY SQUARING WHEEL

The Product is used to correct the edge squareness for ceramic tiles and acquire the preset dimensions. It is characterized by less noise,excellent cutting, Properly and good grinding effect.



SPECIFICATION OF WET & DRY SQUARING WHEEL

ITEM	TYPE	OD (D)	ID ( U )	SEG. (W x X)	P.C.D. ( C )
Vitrified Tiles	Rough	300/250	80/140	10 x 14	105/110/165
	Medium	250	80/140	10 x 14	105/110/165
	Fine	200	80/140	15 x 25	105/110/165
Porcelain Tiles Floor Tiles	Rough	300/250	80/140	10 x 14	105/110/165
	Medium	250	80/140	10 x 14	105/110/165
	Fine	200	80/140	15 x 25	105/110/165
Wall Tiles	Rough	200/250	80/140	10 x 10	105/110/165
	Medium	200	80/140	10 x 10	105/110/165
	Fine	200	80/140	15 x 25	105/110/165

PRESS



2<sup>nd</sup> hand 1<sup>st</sup> choice



Sacmi Press



Sacmi Press



Vertical Dryer